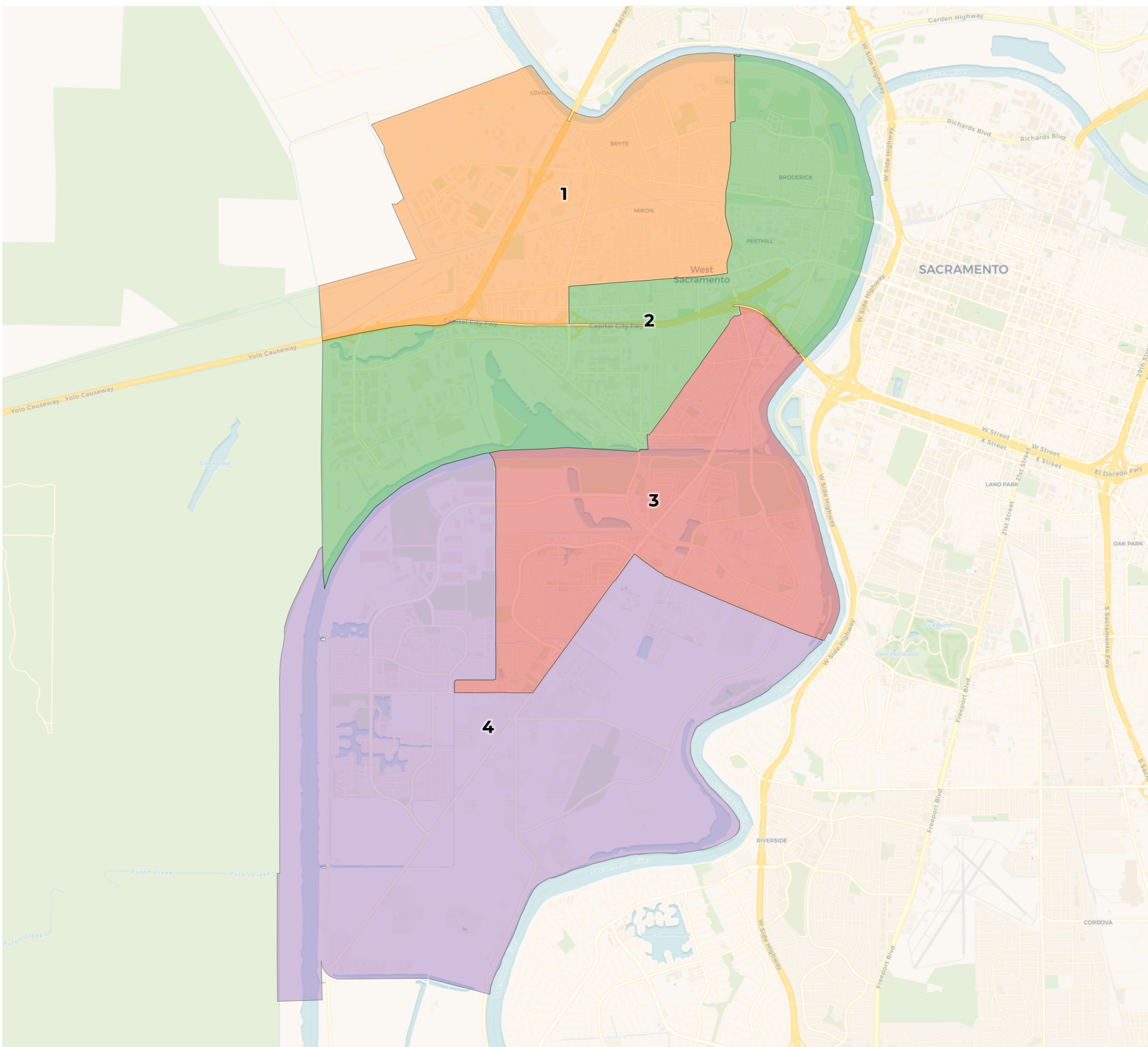


**REDISTRICTING
PARTNERS**

City of West Sacramento
DistrictR ID 121570



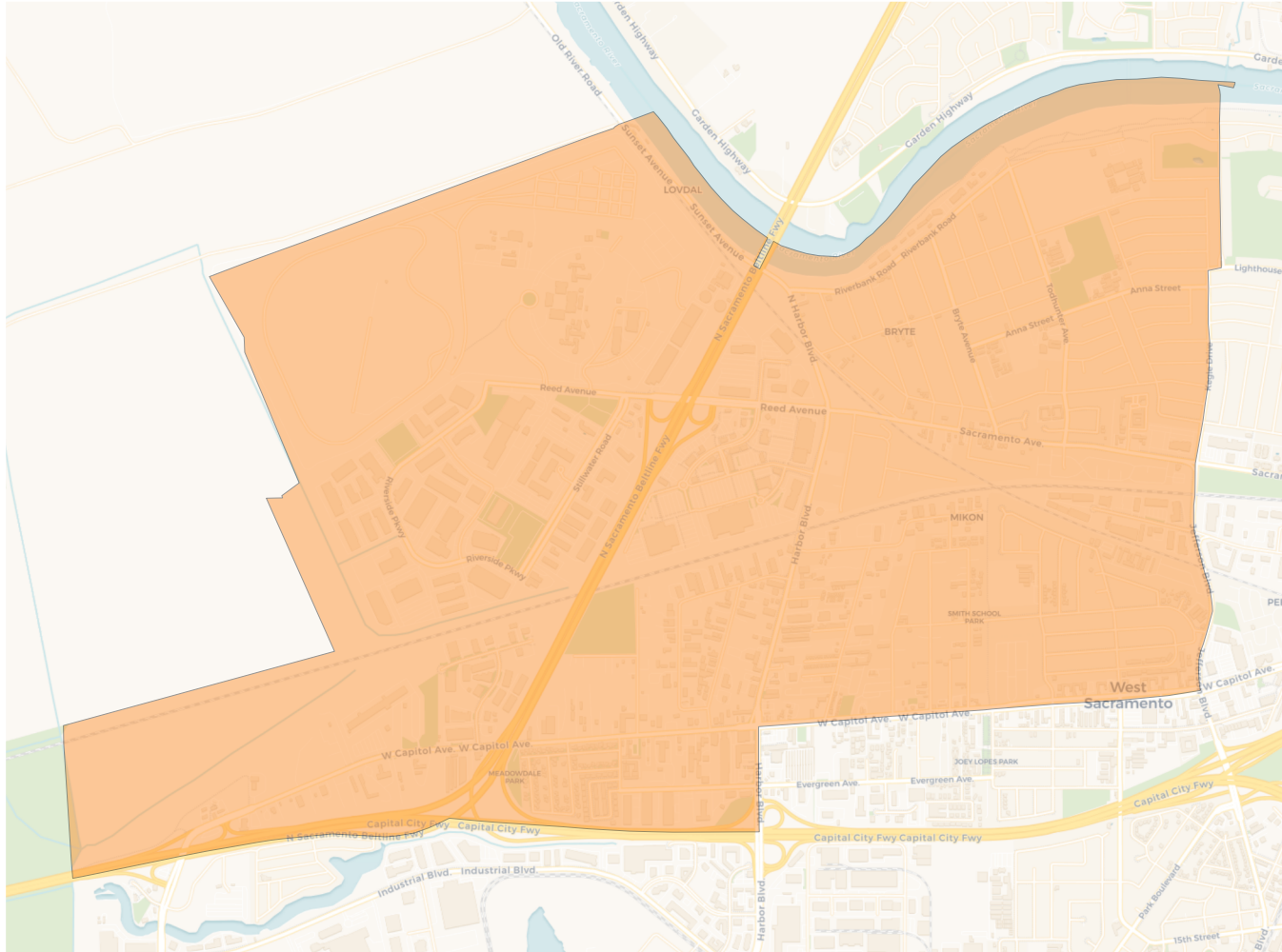
2020 Census

	1	2	3	4
Population	13,506	13,559	13,855	13,157
Deviation	-13	40	336	-362
Deviation %	-0.1%	0.3%	2.5%	-2.7%
Other	5,628	6,470	8,136	6,852
Other %	41.7%	47.7%	58.7%	52.1%
Latino	6,427	4,788	3,154	2,955
Latino %	47.6%	35.3%	22.8%	22.5%
Asian	958	1,491	2,086	2,609
Asian %	7.1%	11.0%	15.1%	19.8%
Black	493	810	479	741
Black %	3.7%	6.0%	3.5%	5.6%

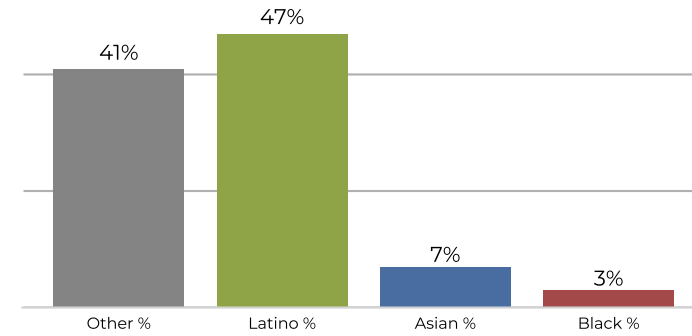
Citizen Voting Age Population (CVAP)

	1	2	3	4
Total CVAP	7,263	8,272	9,917	8,092
Other CVAP	3,711	5,106	6,657	5,175
Other CVAP %	51.1%	61.7%	67.1%	64.0%
Latino CVAP	2,322	2,001	1,596	1,226
Latino CVAP %	32.0%	24.2%	16.1%	15.2%
Asian CVAP	674	498	1,433	1,075
Asian CVAP %	9.3%	6.0%	14.4%	13.3%
Black CVAP	556	667	231	616
Black CVAP %	7.7%	8.1%	2.3%	7.6%

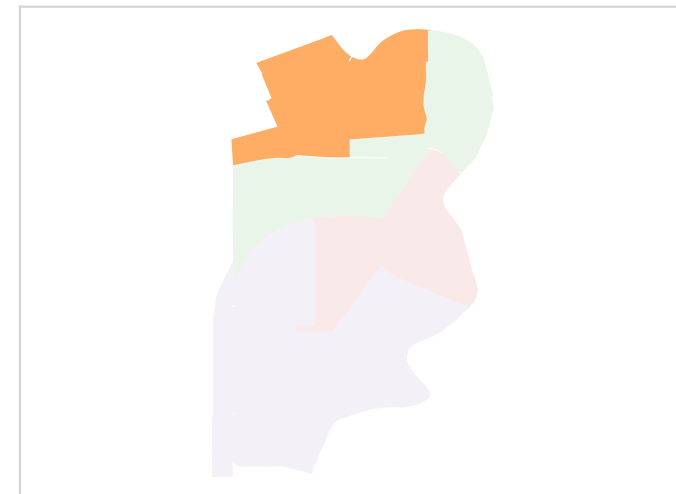
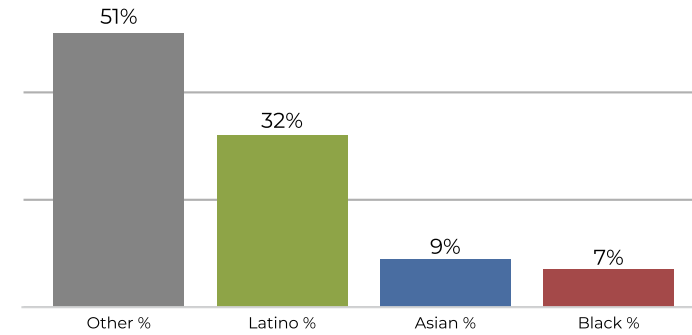
District 1



2020 Census

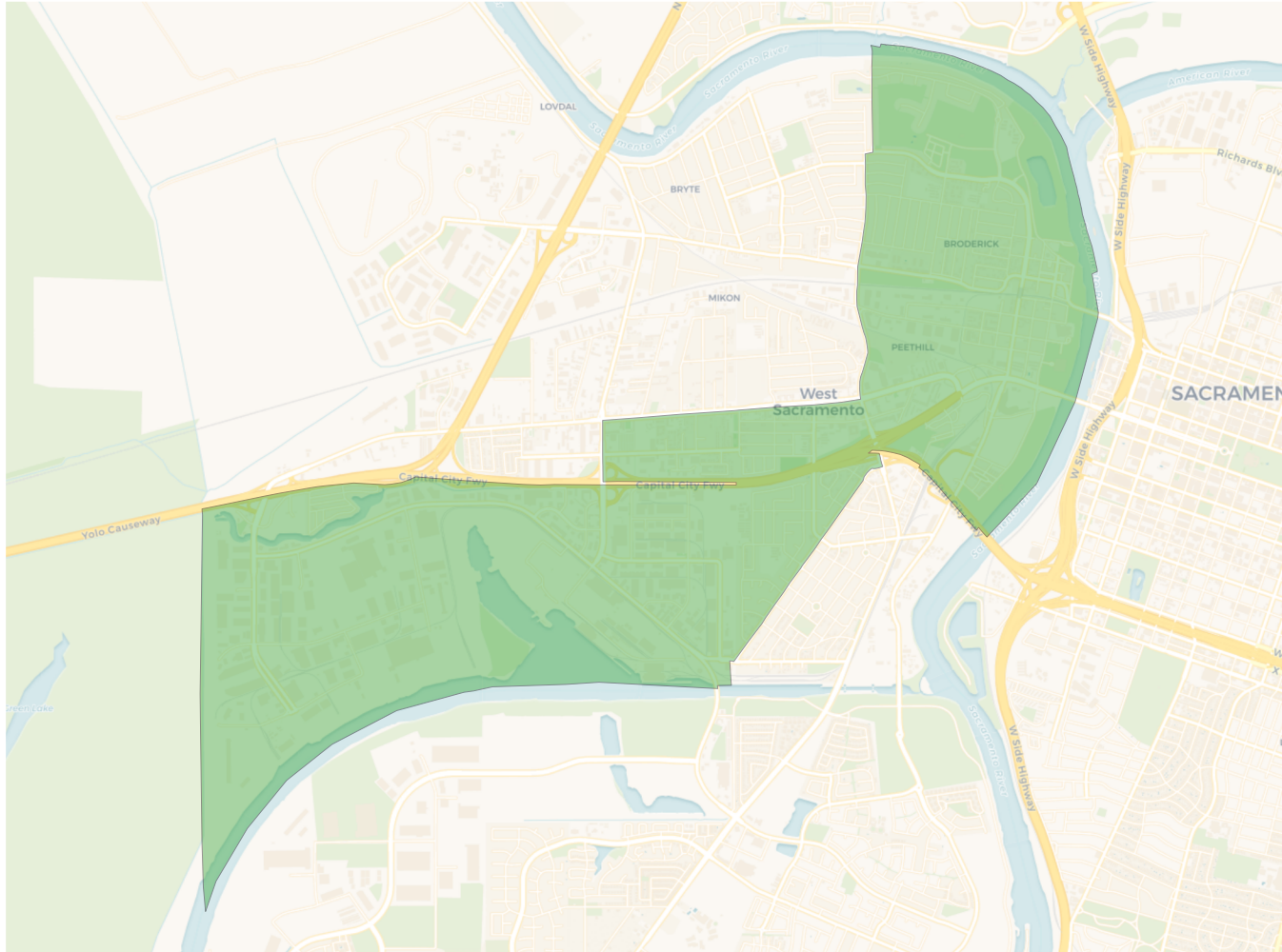


Citizen Voting Age Population

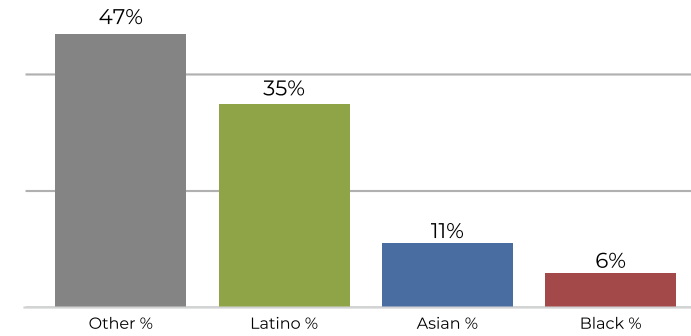


Population	Deviation	Deviation %	Other	Other %	Latino	Latino %	Asian	Asian %	Black	Black %
13,506	-13	-0.1%	5,628	41.7%	6,427	47.6%	958	7.1%	493	3.7%
Total CVAP	Other CVAP	Other CVAP %	Latino CVAP	Latino CVAP %	Asian CVAP	Asian CVAP %	Black CVAP	Black CVAP %		
7,263	3,711	51.1%	2,322	32.0%	674	9.3%	556	7.7%		

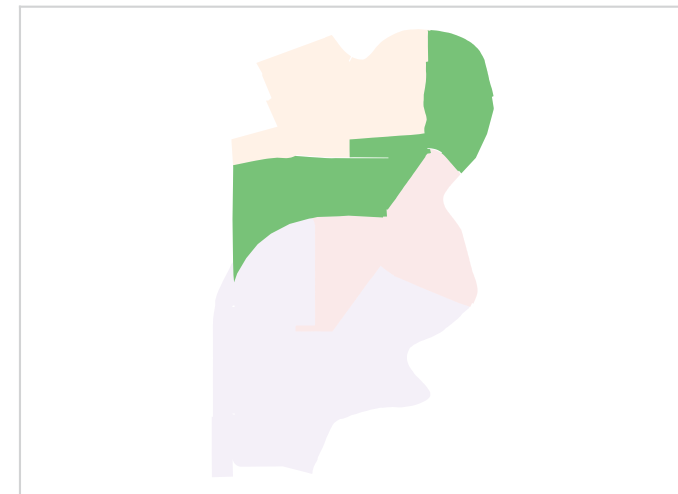
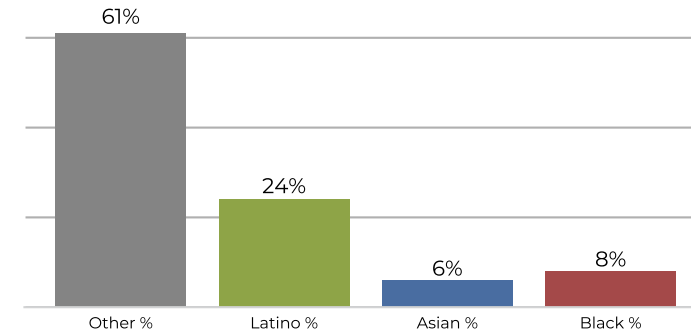
District 2



2020 Census

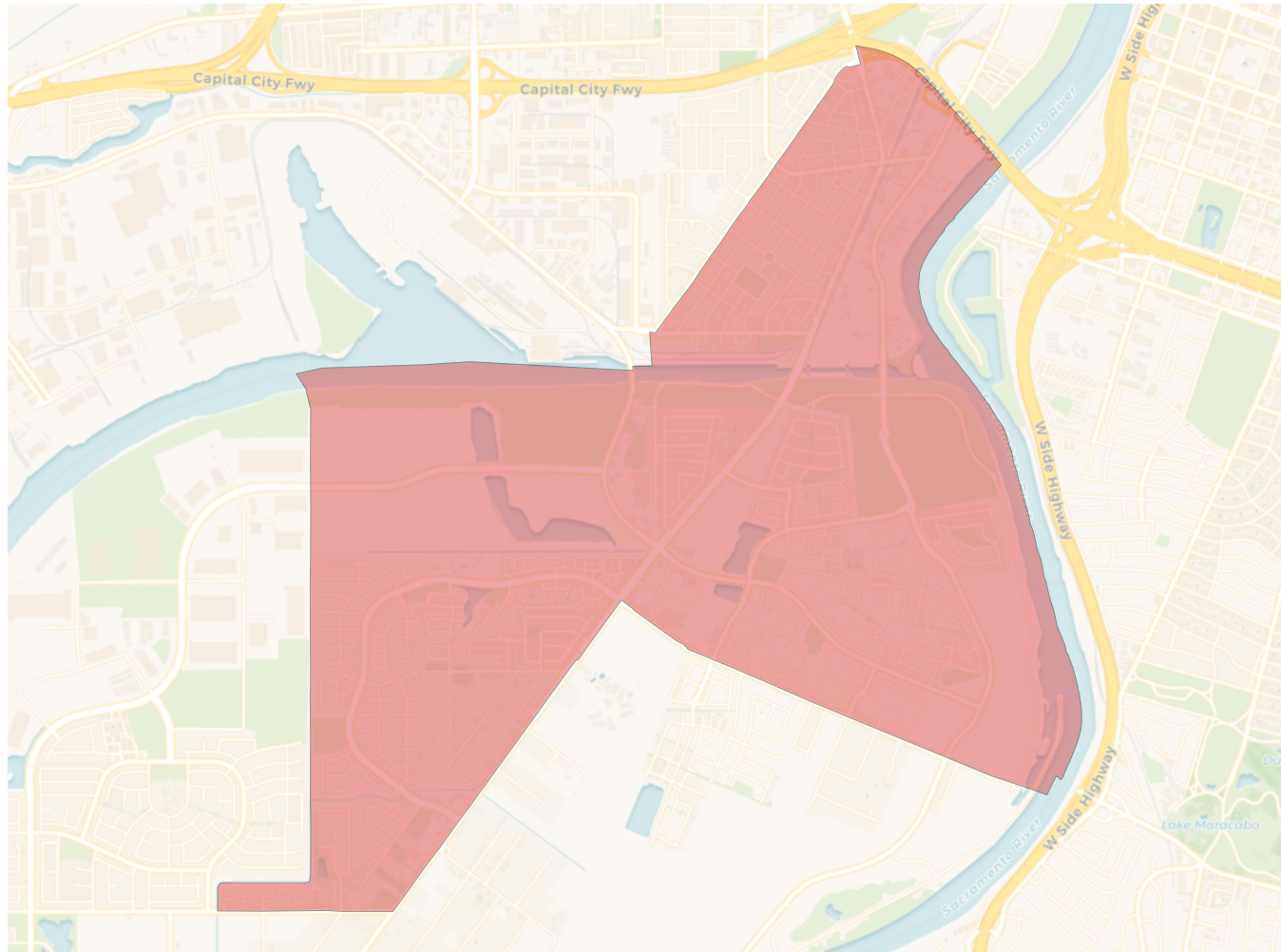


Citizen Voting Age Population

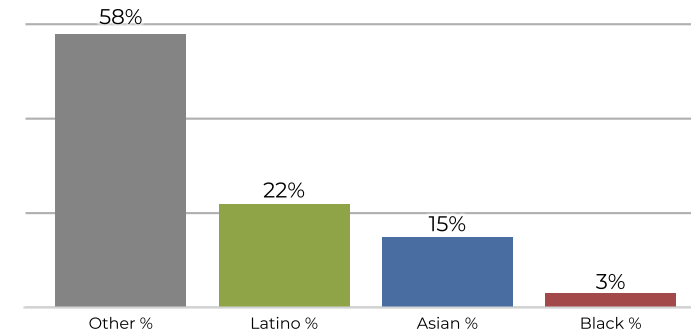


Population	Deviation	Deviation %	Other	Other %	Latino	Latino %	Asian	Asian %	Black	Black %
13,559	40	0.3%	6,470	47.7%	4,788	35.3%	1,491	11.0%	810	6.0%
Total CVAP	Other CVAP	Other CVAP %	Latino CVAP	Latino CVAP %	Asian CVAP	Asian CVAP %	Black CVAP	Black CVAP %		
8,272	5,106	61.7%	2,001	24.2%	498	6.0%	667	8.1%		

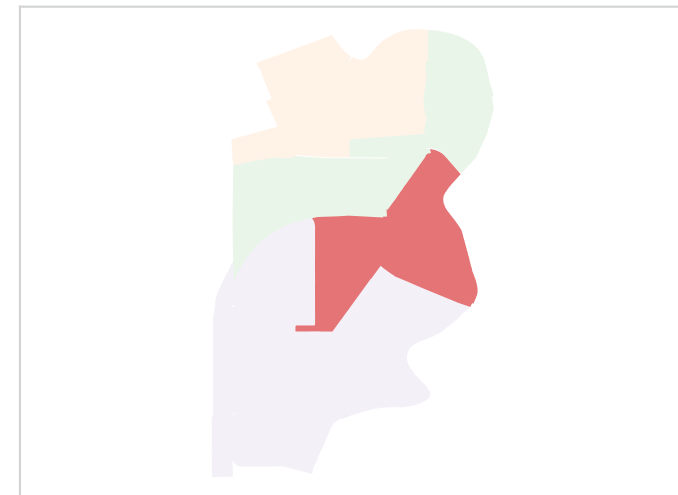
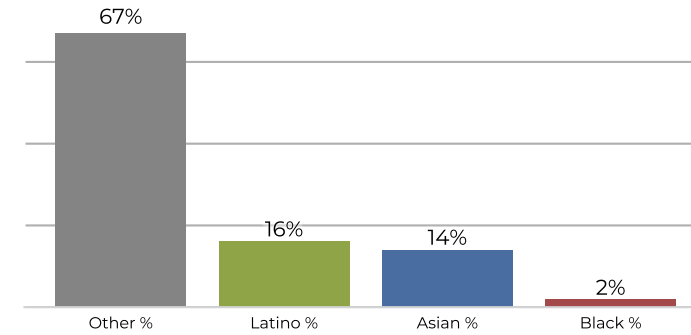
District 3



2020 Census

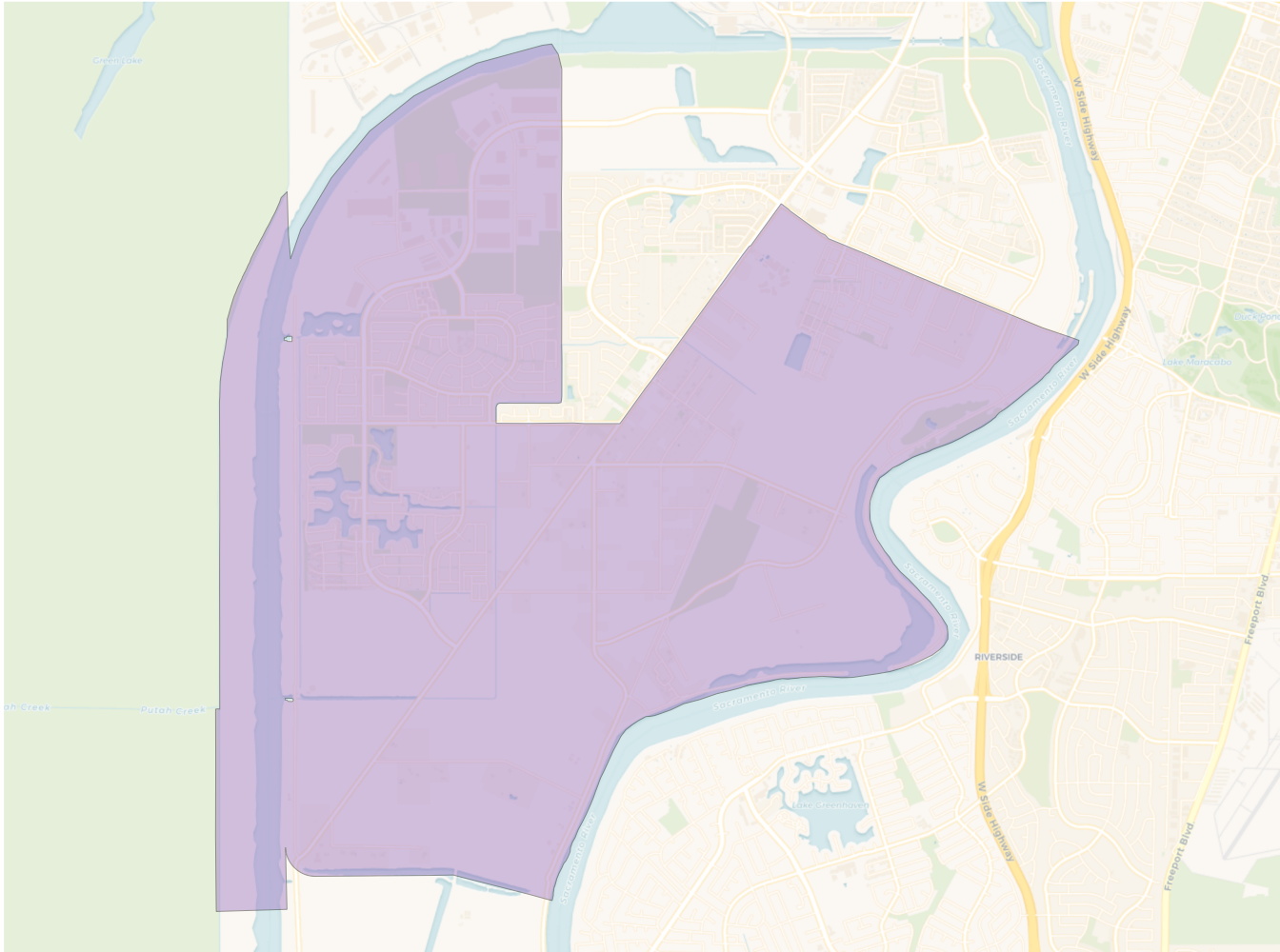


Citizen Voting Age Population

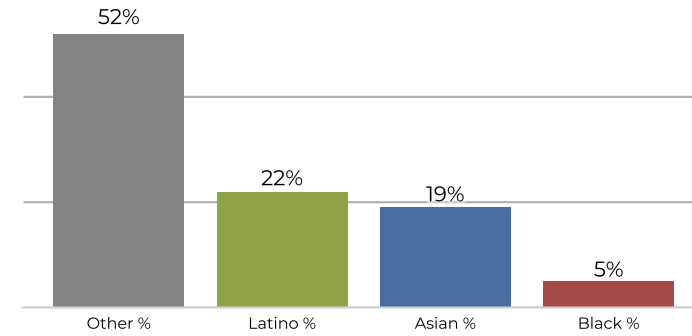


Population	Deviation	Deviation %	Other	Other %	Latino	Latino %	Asian	Asian %	Black	Black %
13,855	336	2.5%	8,136	58.7%	3,154	22.8%	2,086	15.1%	479	3.5%
Total CVAP	Other CVAP	Other CVAP %	Latino CVAP	Latino CVAP %	Asian CVAP	Asian CVAP %	Black CVAP	Black CVAP %		
9,917	6,657	67.1%	1,596	16.1%	1,433	14.4%	231	2.3%		

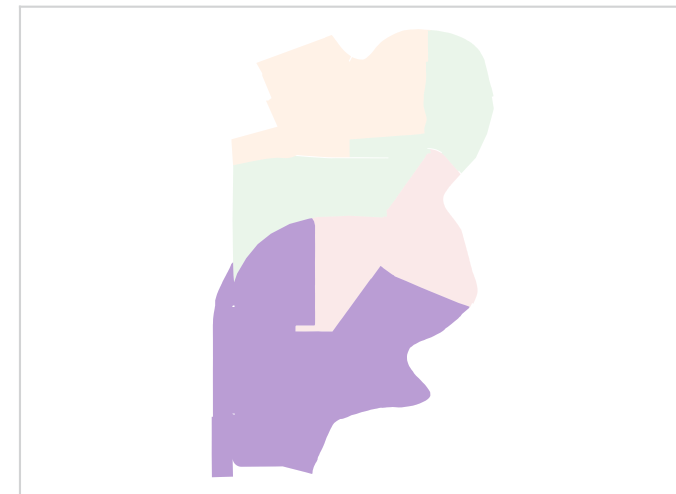
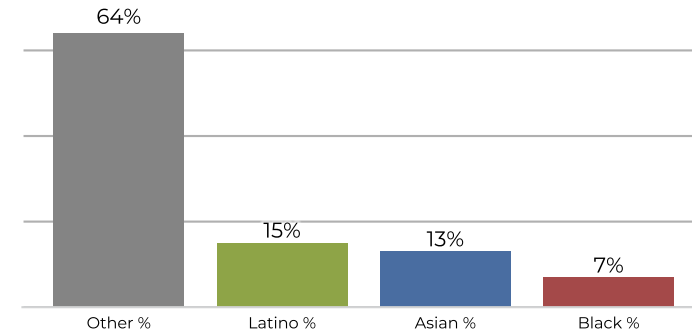
District 4



2020 Census



Citizen Voting Age Population



Population	Deviation	Deviation %	Other	Other %	Latino	Latino %	Asian	Asian %	Black	Black %
13,157	-362	-2.7%	6,852	52.1%	2,955	22.5%	2,609	19.8%	741	5.6%
Total CVAP	Other CVAP	Other CVAP %	Latino CVAP	Latino CVAP %	Asian CVAP	Asian CVAP %	Black CVAP	Black CVAP %		
8,092	5,175	64.0%	1,226	15.2%	1,075	13.3%	616	7.6%		